



Astrology has been used for thousands of years to provide deep insights into one's personality, intimate relationships, and the important influences that affect one's daily life.

MODERN REPORT

A Solar Writer Report for Cameron Diaz

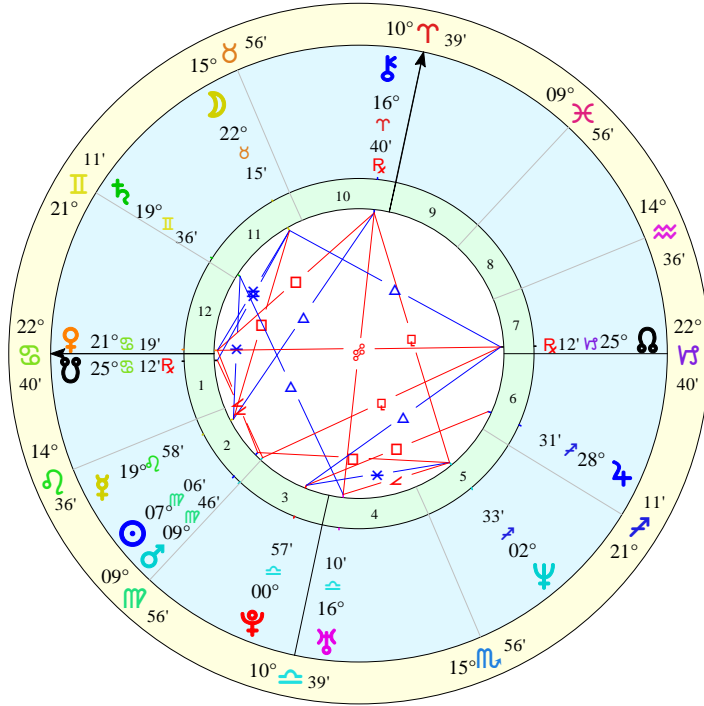


Written by Stephanie Johnson

mysticmind.co.uk

Cameron Diaz

Natal Chart
30 Aug 1972
2:53 PDT +7:00
San Diego CA
32°N43'
117°W09'
Tropical
Placidus



Astrological Summary

Chart Point Positions: Cameron Diaz

Planet	Sign	Position	House	Comment
The Moon	Taurus	22°Ta15'	11th	
The Sun	Virgo	7°Vi06'	2nd	
Mercury	Leo	19°Le58'	2nd	
Venus	Cancer	21°Cn19'	12th	
Mars	Virgo	9°Vi46'	2nd	
Jupiter	Sagittarius	28°Sg31'	6th	
Saturn	Gemini	19°Ge36'	11th	
Uranus	Libra	16°Li10'	4th	
Neptune	Sagittarius	2°Sg33'	5th	
Pluto	Libra	0°Li57'	3rd	
Chiron	Aries	16°Ar40'	10th	
The North Node	Capricorn	25°Cp12'	7th	
The South Node	Cancer	25°Cn12'	1st	
The Ascendant	Cancer	22°Cn40'	1st	
The Midheaven	Aries	10°Ar39'	10th	

Chart Point Aspects

Planet	Aspect	Planet	Orb	App/Sep
The Moon	Square	Mercury	2°16'	Separating
The Moon	Sextile	Venus	0°55'	Separating
The Moon	Trine	The North Node	2°57'	Applying
The Moon	Sextile	The South Node	2°57'	Applying
The Moon	Sextile	The Ascendant	0°24'	Applying
The Sun	Semisquare	Venus	0°46'	Applying
The Sun	Conjunction	Mars	2°39'	Applying
The Sun	Square	Neptune	4°33'	Separating
The Sun	Semisquare	The Ascendant	0°33'	Applying
Mercury	Sextile	Saturn	0°21'	Separating
Mercury	Trine	Chiron	3°17'	Separating
Venus	Square	Chiron	4°39'	Separating
Venus	Opposition	The North Node	3°53'	Applying
Venus	Conjunction	The South Node	3°53'	Applying
Venus	Conjunction	The Ascendant	1°20'	Applying
Mars	Sesquisquare	The North Node	0°26'	Applying
Mars	Semisquare	The South Node	0°26'	Applying
Mars	Quincunx	The Midheaven	0°52'	Applying
Jupiter	Square	Pluto	2°25'	Separating
Saturn	Trine	Uranus	3°25'	Separating
Uranus	Semisquare	Neptune	1°22'	Applying

Uranus	Opposition	Chiron	0°29'	Applying
Uranus	Opposition	The Midheaven	5°31'	Separating
Neptune	Sextile	Pluto	1°35'	Applying
Neptune	Sesquisquare	Chiron	0°53'	Separating
Pluto	Trine	The North Node	5°44'	Separating
Chiron	Conjunction	The Midheaven	6°01'	Applying
The North Node	Opposition	The Ascendant	2°32'	Applying
The South Node	Conjunction	The Ascendant	2°32'	Applying

INTRODUCTION



This report has been written to introduce you to the concepts of astrology and how to get started with your natal chart. Astrology is a complex and meaningful science which takes years to study and apply successfully; however, we would like to whet your appetite with this report, and encourage you to deepen your understanding through other means.

Astrology is a study of the connection between planets and life on Earth. It is based on a concept that energy patterns form between other planets and Earth; and that these energies affect our lives as individuals and communities.

An astrological chart, also known as a horoscope, natal chart, or birth chart, records the relationship between the planets and the signs of the Zodiac. Charts can be calculated for the birth of a person, a community, an event or anything that seems momentous. The horoscope is as individual and unique as a fingerprint.

When using these interpretations, please bear in mind that, inevitably, every chart will contain some contradictory influences, and as a result certain interpretations of different items in the same chart may seem difficult to reconcile. However, this may still be an accurate reflection of your chart, as it is likely that you do experience conflicting desires, events and circumstances in your life. Usually it is the responsibility of an astrologer to synthesise these apparent contradictions in order to present a cohesive and meaningful interpretation of the dilemmas of the chart.

Please also be aware of the fact that each person has positive and negative influences in the chart, and therefore in their lives. The challenge is to accept and overcome the negative influences, so that we can successfully focus on the positive traits. This report outlines both influences, and therefore parts may be difficult to accept. Any advice given is meant to be an aid to a person taking responsibility for their own lives. The ultimate

decision rests with each individual. The author and publisher accept no liability for any adverse effects of this report.

LIFE GOALS



*If you would hit the mark, you must aim a little above it;
Every arrow that flies feels the attraction of earth.*
Longfellow, *Elegiac Verse* 1880.

Just as the Sun is the centre of the Earth's Solar System, so does the Sun play a vital role in your life on earth. Your life goals are linked to your Sun - its zodiac sign and its position in your chart. Contrary to popular belief, the Sun isn't the only planet to be considered in a person's chart, but it is an important component. The Sun gives you an indication of how you can shine in your life. You will feel truly alive when you're living the traits indicated by your Sun. Therefore it's likely that you will spend much of your life on a journey to self discovery, aiming to incorporate these traits into your life. Understanding the energy of your Sun is a good starting point to understanding yourself and your purpose in life.

Your Sun is in the second house of your birth chart meaning that you're the sort of person who spends much of your life exploring your personal values. It's important for you to have a set of values by which you can judge your own and others' lives, as long as you don't become too critical when either you or others fail to live up to your expectations. If you're too critical then you will find that your self-esteem suffers, as you worry about your own failures or others become fed up with your harsh attitude. In fact your self-esteem may also be tied up with your ability to handle your finances. Money, and the pleasures that it can afford, are attractive to you. You may expend much of your time and energy earning money in order to build yourself up, or to buy possessions that help you feel secure. The challenge is to value yourself no matter what are your external circumstances. However you're likely to benefit financially through generous benefactors, possibly your father or a member of your father's side of the family. You could also benefit financially through a career as a government official.

Your Sun is in the zodiac sign of Virgo indicating that you're an analytical person with a keen mind, and will enjoy paying attention to detail. In fact you enjoy anything which requires close analysis ranging from pastimes such as mind-bending puzzles to more demanding work such as cataloguing data and scientific research. You excel in areas that demand concentration, organisation and rational thought. You love order, particularly in your daily life. This can include anything from an organised household to a properly-planned social calendar. Your loved ones will often rely on your organisational abilities, and these qualities may extend into your working life where others will come to appreciate your executive abilities. Hygiene will also be of importance to you, as you've an excellent understanding of the need to take care of your body, and the importance of a healthy mind and a healthy body. "Cleanliness is next to godliness" may be a motto which rings a bell. You need to take care not to become too fussy, otherwise you may find that you become intolerant and critical of yourself and those around you. You would do well to remind yourself of the bigger picture every now and then so that you don't become too entrenched in insignificant details.

The Sun and the planet Mars come into contact in your chart meaning that you're hard working and energetic, able to tackle most of life's challenges with confidence and a positive attitude. A natural-born leader, you prefer taking the initiative, rather than sitting back and waiting for things to happen. You're courageous and like to take a few risks in life, particularly ones that satisfy your sense of adventure and provide an outlet for your boundless energy. Self-motivation comes easily and you find it difficult to accept the motto that "all good things come to those who wait". You prefer to tackle a project or problem head on rather than wait around for a solution. While confidence and initiative are positive traits, you do need to exercise some patience and caution. Knowing when to take risks and when to wait are both vital to a successful outcome in any project. As long as you find positive outlets for your enterprising nature, and don't act too impulsively you're likely to stride forth and succeed in achieving your life goals.

Your lack of confidence is likely to stand in your way in achieving your life goals. This is because the Sun is making a difficult aspect to the planet Neptune in your birth chart. You're a sympathetic and kind person, but you're apt to be overwhelmed by the injustices of the world. As a result you lose sight of your goals and become confused about your direction. It's also possible that you allow other people to tell you how to live your life. You're so eager to please others, that you find it difficult to assert your own rights and beliefs. At times like these you may benefit from moments of quiet reflection, or meditation, which enable you to develop an ability to rely on your own inner resources. It's possible that your confusion stems from childhood experience with your father, or a father figure. Perhaps this person was weak or ill and unable to support your development, or perhaps the death or absence of a father strongly influenced your life. Either way the result is that you've difficulty finding a firm footing on which to base your life as an adult. Your challenge is to learn to trust your own intuition, and to use your artistic and sensitive nature for the benefit of other people without losing yourself.

The planet Jupiter also tells you about your goals in life, in particular the areas in which you are likely to succeed. Jupiter is the planet of expansion, abundance and wisdom. Ancient astrologers believed that the planet Jupiter had a greatly beneficial effect on a

person's life.

Jupiter is also in the sixth house of your chart signifying that you certainly know how to liven up a dull day, even if it does mean re-scheduling a few commitments and shaking up other people's routines. You like to live each day to the full, ignoring the rigours of "should" and "have to" in favour of comfort and fun. You're full of boundless energy and tend to complete the mundane jobs in a flurry of activity so that the rest of the day can be enjoyed in other ways. Fortunately you're usually healthy and your body is quite resilient, which means you've lots of energy for filling your day with fun-filled projects. You can achieve quite a lot in one day. Work and fun often mean the same thing to you, with you spending much of your time on the job. Mostly this isn't a problem as you enjoy your work and can make a good income, but you need to be careful not to overdo things. It's also possible that your work is linked to your own personal and spiritual beliefs, and these may be associated with caring for other people. You enjoy employment that gives you plenty of freedom to set your own goals, a job that doesn't tie you to a desk but involves some travel.

You've the planet Jupiter in the zodiac sign of Sagittarius in your birth chart indicating that you've a love of life which is infectious and a blessing to all who come in contact with you. You're an open and generous person, fond of seeing the lighter side of life. Your sense of humour stands you in good stead throughout your life. Other people admire your positive outlook and enjoy spending time in your company, as well as offering you favours. You love adventure of all kinds whether it be travelling around your own country or to distant shores. You particularly enjoy exploring different cultures and religions, either through academic study or travelling abroad. Your thirst for knowledge sometimes seems insatiable. Although you're a perennial student, you also enjoy sharing your knowledge with other people through writing or teaching. In fact you can be an inspirational teacher. You may also be fond of sport, particularly adventurous sports. The planet Jupiter is considered to be particularly favoured in the sign of Sagittarius and therefore you're likely to have success in whatever avenue you undertake.

The planets Jupiter and Pluto are making a difficult aspect in your birth chart indicating that you've some difficulty achieving your life goals, but you will get to where you want in the end. The problem is that you reject the usual paths to success, believing that you've a better way of doing things. Your attempts to change the rules, or to try to make others agree with your insights, are sincere, but intrusive. As a result you often land yourself in troublesome situations, which can lead to disillusionment and distract you from your purpose. This can dent your confidence. You range from over confidence to completely lacking in confidence. The truth lies somewhere in between. Society has rules to run itself efficiently, and these can be to your benefit rather than detriment. Once you accept your own and society's limitations then you can achieve your objectives.

HOME



*Perverse and foolish oft I strayed,
But yet in love he sought me,
And on his shoulder gently laid,
And home, rejoicing, brought me.*
Hymn, *The King of love my Shepherd is* 1868.

Astrologers from different schools of thought allocate varying meanings to the Moon in a birth chart. Ancient astrologers say that the Moon changes its nature according to its phases, and merely passes on impressions from other planets rather than directly influencing a person's life. However, modern astrologers tell us that the Moon depicts a person's roots, our home and family. They say the Moon also shows our habitual nature or subconscious patterns of behaviour which stand in the way of achieving our life goals. While the Moon can show us our strengths, it can also depict our weaknesses which need to be overcome in order to be successful in life.

The Moon is placed in the eleventh house of your birth chart suggesting that friends and acquaintances are a major feature of your life, influencing you both positively and negatively. On the one hand your friends can be unreliable and changeable failing to live up to your ideals of true friendship. It may be that your friends change within themselves and move on emotionally, or simply that they move out of town and lose contact. Either way you suffer because you feel a sense of loss when separated from your friends. You seek a sense of security from your relationships with other people, only feeling safe when surrounded by warm and loving friends. This is particularly true of your women friends and groups of women, which are likely to feature prominently. Sudden changes in friendships can be disappointing. On a more positive note you can benefit from your large circle of acquaintances who help you emotionally and financially to achieve your own hopes and wishes. You enjoy popularity in groups, particularly when you feel that you feel a sense of belonging. You may find yourself drawn towards humanitarian

groups.

With the Moon in the sign of Taurus, the creature comforts of life appeal to you, offering a safe haven in a busy world. At times you may have difficulty rousing yourself to face new challenges, particularly if you're feeling insecure in your life. However, it's only that routine and familiar surroundings feel so safe in an unpredictable world. Fortunately you also enjoy establishing order in your life, and this can rouse you from any temptation to overindulge. In fact you can often be found quietly sorting through files and drawers, weeding the garden bed or some such useful activity. Your down-to-earth nature usually asserts itself when needed. You also enjoy keeping up with traditions - reliable rituals that have been passed down through the generations giving you a sense of life being reliable and predictable. Astrologically speaking the Moon is exalted when in Taurus, emphasising that wonderful ability of yours to establish order.

EDUCATION AND COMMUNICATION



*There is no such whetstone, to sharpen a good wit
and encourage a will to learning, as is praise.*
Roger Ascham, *The Schoolmaster* 1570.

Our academic schooling and learning through life experience are linked to the planet Mercury. This planet stands for the intellect, common sense, cold reason, commerce and business. It tells us about our communication and learning habits and our modes of thinking.

The planet Mercury in the second house of your chart signifies that you've many ingenious money-making ideas, which you are not afraid to risk testing. Some times these ideas pay big dividends, but at others you've to bail out of a tricky situation. However, you are not one to dwell on past mistakes, nor do you let them deter you from trying out new ideas. You may earn your money by holding down more than one job at a time, juggling your timetable to fit in all of your commitments. Money-making careers could include clerical occupations, distributing information, advertising, accountancy, sales, writing, speaking, travelling, teaching, business and commercial affairs, selling or distributing stationery and books. Whatever your chosen profession your finances are likely to fluctuate unless you've other influences of financial stability in your chart.

The planet Mercury in the zodiac sign of Leo indicates that you're enthusiastic in your quest for knowledge, and generous in sharing all that you've learnt even though it's sometimes to a somewhat reluctant audience. Mostly others enjoy listening to your creative story-telling talents, and find themselves enthralled by your lively communication. You may even find yourself on the stage during some time in your life. You do like the sound of our own voice. And why not? You're proud of your learning abilities, and believe in the saying that learning is fun. Your enthusiasm can be contagious. You can be creative in your thought process, and have an appreciation of the arts. You can also enjoy conversing with children. While it's true that you're an

enthusiastic communicator, it's also true that your mind often turns to thoughts of your own ambitions. You're confident in your ability to communicate with others, and know that this trait could push you into a leadership role. As long as you keep your tendency to be a know-it-all under check, then you should succeed.

The planet Mercury is making favourable contact with the planet Saturn in your birth chart indicating that you've good intellectual abilities. Your mind is contemplative and profound, capable of concentration and comprehension. Therefore you're likely to shine in pursuits such as study, writing, publishing, lecturing, teaching, travelling, diplomacy, and business. You may be particularly interested in science, politics or medicine. You're fortunate to have good judgement and reasoning powers, as well as an excellent memory. You may have had difficulty expressing yourself as a child, but as an adult you're able to speak your mind in a logical and methodical manner. The saying "older and wiser" certainly applies in your case. You're a sensible person, able to make careful plans and carry them through to completion. Depending on other aspects in your chart you're more likely to take a traditional path in your education, rather than explore uncharted territory. The steady approach to education and communication suits you. You've the ability to become a voice of authority in your field of expertise, particularly a field which requires business acumen, good communication skills and common sense. In other words, you're capable of achieving whatever you set your mind to.

You need to take care in your communications and education because of the unfavourable combination of the Moon and the Planet Mercury. You've a sharp mind and a quick wit, but unfortunately you've a tendency to gossip and be sarcastic rather than put your skills to good use. In some cases this combination can also highlight a tendency to dishonesty and worry. Of course you're worried, because you can only judge other people by your own standards and these may not be very high! Of course much of this depends on other influences in your birth chart. On a positive note you can turn your mind to your studies and to improving your communication skills.

RELATIONSHIPS



*Let me not to the marriage of true minds
Admit impediments. Love isn't love
Which alters when it alteration finds.
Shakespeare Sonnet 116.*

The planet Venus tells about love and relationships. It reveals the type of relationship we value, and what we are seeking from our most intimate relationship, as well as how we like to show our love. It answers questions such as, are we attracted to strong, sensual and intense relationships? Or do we prefer some freedom and independence? This planet also depicts how we like to relate to our environment and other people, not just our primary partner, and how much importance we place on money and resources.

When the planet Venus is placed in the twelfth house of your birth chart you're likely to enjoy your own company, perhaps even craving the peace and quiet offered by seclusion rather than the hustle and bustle of a hectic social life. Your friends need to respect your need to be alone at times. On occasion you don't mind spending your time with one or two friends, particularly women friends, but "the more the merrier" is definitely not your motto. You're more likely to be an introvert than an extrovert, revelling in a fantasy world or in your secret pastimes. You love mystery and romance, and have more than your share of secrets, perhaps even investigating secret arts. The worlds of magic, alchemy and astrology hold a certain appeal, as do many of the occult arts. Your success in the world may be as a result of your investigation into the secret arts. Success may also come as a result of your work behind the scenes in your profession, or in an institution or charitable organisation. Your tendency to delight in secrets also includes secret lovers. For this reason you need to be wary of secret enemies, in particular women.

With Venus in the sign of Cancer your relationship with your family plays a key role in

your life, as you like to feel that you belong to a tribe. Whether the relationships run a smooth or rocky course, you're bonded with your family. Your mother in particular may be a key figure. You also like to form close friendships. Social occasions may revolved around family events, and over the years your friends become part of the family, mingling easily with family members at social occasions. You seek a partner who can also become part of your family and help you keep the home fires burning. You enjoy sharing the comforts of your home with your loved one, including forming a family of your own, as you enjoy children. Domesticity is an important avenue of sharing with your partner. You enjoy cooking for your loved ones, and providing for their needs. You may also enjoy tracing the family tree. When it comes to money matters, you like the security that a regular income brings. You also like to invest your money, gaining emotional comfort from the fact that it's a nest egg for the future.

You enjoy comfortable relationships with other people because of the favourable combination of the Moon and Venus in your birth chart. A charming and prudent person, you enjoy the company of other people, and they respond favourably. You're likely to enjoy success in your primary relationship, choosing someone who feels comfortable and companionable. You're also likely to benefit from your relationships with women.

MOTIVATION



*Dimidium facti qui coepit habet: sapere aude.
To have begun is half the job: be bold and be sensible.*
Horace, *Epistles* 65- 68BC.

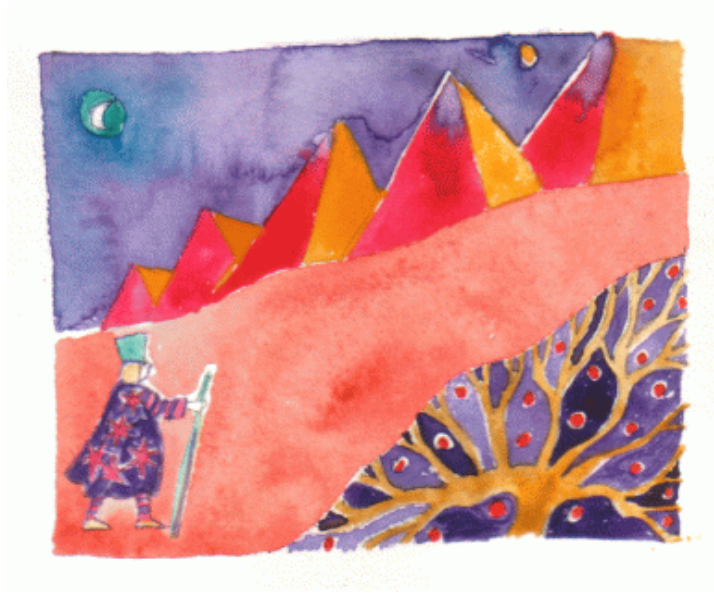
Mars is the planet that tells us about our assertion and drive. It tells us what motivates us and what desires drive us most powerfully. Are we ambitious for professional power, or do we desire a meaningful relationship? Do we pursue our desires aggressively? Or do we sit back, lacking the confidence to achieve our ambitions? These are the types of questions answered by the qualities of the planet Mars in our chart.

With Mars placed in the second house of your birth chart you're motivated by money. In fact money plays a major role in your life, either the lack of money or the accumulation of wealth. You have probably experienced both and realise the extent to which you money can make you feel powerful. As a result at least part of your life is likely to be spent working towards the ambition of monetary riches. Any wealth is accumulated as a result of your own hard work. You can be quite aggressive in pursuit of wealth driving a hard bargain with any potential employer. You also know how to barter with shop attendants for a better price, or where to find the best bargain for your money. You need to be wary of becoming too aggressive in your pursuit of material wealth, alienating others along the way. One of your challenges is to learn to rely own your own personal resources, rather than focussing only on material resources. You have a strong set of personal values, which can help keep you on the right track. There is, however, a danger that you can be too aggressive in your insistence that others adhere to your values.

The planet Mars in the sign of Virgo indicates that you're a shrewd person and will pursue your personal desires in a practical and methodical manner. You have a strong drive for perfection, and can often be found organising and re-arranging your environment in order that you live life more efficiently. You're keen to employ schedules

and routines to help you run your daily life. It's also true that you find it difficult to cope if your routines are disrupted, and you have little patience for less-organised people. In fact you can be quite critical and judgmental, believing your methods to be the most practical and efficient, superior to other people's efforts. You don't suffer fools gladly and need to be careful to curb the perfectionist side of your nature. In some cases your interest is likely to be sparked by scientific pursuits, in particular medicine, but generally any science or research could be pursued. You prefer to be able to pursue your own interests without interference from other people and can systematically remove anyone who stands in your way. While this may sound harsh, it's true that you possess a vengeful side of your nature if opposed.

CAREER AND AMBITIONS



*The road up and the road down are one and the same
Heraclitus, Die Fragmente der Vorsokratiker c540-480BC.*

The planet Saturn represents responsibility, boundaries and structure; structure that provides a positive framework within which we can build, or structure that limits our development and forces us to reassess our liabilities and assets. This planet is also linked with our ambitions, and how we approach the practical side of life. This planet often represents the professional side of our lives.

The planet Saturn placed in the eleventh house of your birth chart suggests that friendships are a serious component of your life, providing you with little amusement but much support and wise counsel. You would rather have a few true loyal friends than enjoy many wayfaring companions. You like to rely on your friends to be committed, but they don't always live up to your expectations. As a result you're likely to suffer some disappointment in your friendships at some stage of your life. It's also possible that most of your friends are linked to your professional life. In other words your business or professional colleagues are also your friends. In some cases you could be deceived through false friends, losing money and reputation. This, of course, depends on other influences in your birth chart. Nevertheless you would be wise to avoid entering into business deals with friends, or lending money to friends until you're sure that the other influences are positive.

The planet Saturn in the sign of Gemini signifies that you're a disciplined and logical thinker with the ability to organise details. You're observant, adaptable and resourceful - all qualities which enable you to be promoted to managerial positions. You can also achieve great success in intellectual pursuits where the combination of logic and ingenuity are formidable. In fact you could excel in any position which requires organisational abilities. In some cases you may feel torn between two pursuits, not sure

which path to take in life. It's also possible that you could benefit from having two projects on the go at once. You prefer straight talk and can sometimes be accused of lacking tact. This doesn't overly concern you because of your belief that honesty is the best policy in the long term. You need to be careful because you could be deceived by others who are not as honest as you. Although you could suffer some difficulties through family members or financial investments, you're likely to achieve your ambitions, particularly in the intellectual fields.

You're recognised in your career for your ability to plan and organise, making the most of available resources while adopting new and innovative approaches to tasks. This is because of the combination of the planets of Saturn and Uranus, which indicate a mix of initiative and good old-fashioned common sense - a formidable blend. You're independent, resourceful and self-motivated, all of which enable you to achieve success in whatever you turn your mind to. You may discover that you've natural abilities in the fields of science, mathematics, research, business organisation, industry and metaphysics. It's likely that you'll succeed in any career that utilises your gift for blending the old with the new.

The Midheaven is one of the important angles in a birth chart and is also known by astrologers as the MC or Medium Coeli. This angle tells us of our public life, our profession and social status. In other words how we are viewed by the public, how we want to be viewed by the public and what type of profession we are likely to choose. It's also important to note the house position of the ruling planet of your Midheaven for further information about your career as this can greatly influence the interpretation.

With a Midheaven in the sign of Aries and ruled by the planet Mars, you're likely to choose any career which gives you the freedom to follow your own path. You're a leader, rather than a follower, and prefer a profession which provides independence and autonomy. In fact you have difficulty settling into a job which doesn't give you plenty of authority. You don't like to work with someone watching over your shoulder, preferring to go at your own pace. You may even have difficulty working in an office, where routine and schedules are the order of the day. You prefer to be on the road, or to work your own hours. Assertion, power and initiative are keys to you succeeding in your chosen career. Examples of famous people with the same Midheaven include Hollywood actress Meryl Streep, Prince Charles of England, UK politician Neil Kinnock, and Australian opera singer June Bronhill.

CREATIVITY AND ORIGINALITY



The artist must be in his work as God is in creation, invisible and all-powerful; one must sense him everywhere but never see him.
Gustav Flaubert, *Correspondence* 1857-64.

The planet Uranus represents originality and unconventionality. This can be both the unusual and brilliant genius or the wilful rebel without a cause. This planet tells us the areas in which we break with convention, become innovative and experiment with new and exciting ways. In some circles of astrology Uranus represents the creative genius which comes directly via our soul or higher self.

The planet Uranus is in the fourth house of your birth chart suggesting that you've a busy, unusual and unconventional home-life. As a child you may have experienced sudden changes in the home environment, or a general sense of being unsettled. It's even possible that you were estranged from your parents. As an adult you may seek unusual homes, or continue to experience restlessness. In some cases home is a positive experience during childhood - an original and unconventional environment in which everyone expresses their own creative urges. Either way it's possible that as an adult you've a preference for the open road, rather than a need to settle and put down roots. If you do settle in one place then it's likely to be a unique home, reflecting your individual nature. You may choose to live on your own, because you need a home and family environment which enables you to express your individuality, one from which you can come and go without restrictions. Property development and investment are also affected by this placement of the planet Uranus. You're likely to experience sudden gains and sudden losses through investment in property, and need to be wary of spending your old age in poverty as a result.

The planet Uranus was in the sign of Libra from 1968 - 1975. It's important to note that

Uranus spends a long time in each sign, and therefore the interpretation applies to a generation rather than the individual. For a more individual interpretation you need to look at the house position of Uranus in your chart. Uranus in the sign of Libra indicates that you belong to a generation which seeks new ways of achieving just human relations. This period indicates the breaking down of the old forms of relationships and the introduction of new ones and the introduction of new concepts about justice. Your creativity soars when you're tackling these issues.

The planets Uranus and Neptune are combining in your chart suggesting that you're concerned about spiritual matters and try hard to bring about social change. You've an ideal of how the world could be, and yet have difficulty living up to your own standards. Perhaps you're being too idealistic, or perhaps you lack the discipline needed to fully explore your creative talents. Either way you need to develop a more realistic approach to creative matters. This way you'll be able to enjoy explore your talents, which may lie in writing, healing, social welfare, healing or spiritual fields. You're keen to explore metaphysical matters, perhaps even belonging to a secret society or a group dedicated to global healing, charity or spirituality. Your psychic abilities and intuition are likely to be heightened, and this may help you explore your creativity.

Neptune is the planet of creativity and spirituality. It represents both the bliss of spiritual attainment and the heights of creativity. This isn't personal spirituality and creativity which comes at the expense of others, but gifts which can benefit humanity. This planet also represents the confusion that can accompany the road to discovering when we are being selfish, as opposed to when we are generously thinking of how our gifts can benefit others.

The planet Neptune placed in the fifth house of your chart means that you've a strong artistic nature, with an ability to be creative by using your intuition. However it's possible that you may have to make sacrifices before you can be creative. These sacrifices can be experienced in early childhood or as an adult, or both. For instance, as a child you may long to go out and play with other children, but you suffer from a debilitating illness. As an adult you may long to be an artist, but first you've to care for an ailing mother. This sense of sacrifice is also likely to be linked with children. Perhaps you can't bear children of your own, or there are delays and frustrations. You've a romantic and seductive side to your nature, which can attract beneficial or deceitful lovers, depending on other aspects in your chart. These aspects will also mean that you may be subject to deceit or benefits from speculative investments.

The planet Neptune was in the sign of Sagittarius from 1970 - 1984. It's important to note that Neptune takes about 164 years to make a complete cycle, spending about thirteen years in each sign, and therefore the interpretation applies to a generation rather than the individual. For a more individual interpretation you need to look at the house position of Neptune in your chart. Neptune in the sign of Sagittarius indicates that you belong to a generation possessing the gift of spiritual vision. You'll be able to help humanity focus on spiritual goals and become more expansive and inclusive of differing races and beliefs.

The planets Neptune and Pluto both move slowly through the zodiac, and therefore any connection between the two planets affects birth charts for a short period of time. You were born in such a time. This combination in your chart means that you're interested in opportunities to bring about fundamental change to human values. You are aware of injustices in society and, depending on other influences in your chart, may prefer to fight against them rather than sit back and accept the ills of society. Your creative urges may be linked to politics, or expressing your political views through the arts or spiritual or charitable organisations.

CHALLENGES IN LIFE



The spirit of self-help is the root of all genuine growth in the individual.
 Samuel Smiles, *Self-Help* 1859.

The planet Pluto challenges us to transform our lives by clearing out our old habits to make way for the new, more rewarding ways of living. The process isn't necessarily an easy one, as most of us cling tenaciously to the comfort offered by habitual patterns, and are rather scared of new paths. Pluto shows us in which areas of our lives we need to grow, and to a certain extent whether we're likely to find the process of growing painful or joyful.

The planet Pluto is in the third house of your birth chart indicating that you're a powerful communicator. You may not realise the forceful effect that your words have on other people, or you may be well aware of the effect, making use of your skills through public speaking or writing. It's possible that you take on the role of spokesperson for a neighbourhood group, or for anyone who has trouble speaking up for themselves. You've a probing mind, with an intense need to delve into most subjects. You become impatient with idle chitchat, which you believe merely skates over the surface, wasting valuable time. There are few subjects that are taboo in your life, and you may enjoy psychology, psychiatry and metaphysical studies, because these satisfy your need to probe beyond the superficial. You may have some difficulties communicating with people who prefer to keep their distance, those who feel uncomfortable with the intimate nature of your conversations. Your challenge is to communicate as honestly as possible, while respecting other people's rights to their own private thoughts.

The planet Pluto was in the sign of Libra from 1972 - 1984. It's important to note that Pluto takes about 248 years to make a complete cycle, spending 12 - 32 years in each sign, and therefore the interpretation applies to a generation rather than the individual. For a more individual interpretation you need to look at the house position of Pluto in

your chart. Pluto in the sign of Libra suggests that you belong to a generation concerned with global justice and transforming human relations. Your generation possesses the ability to see the necessity for change in personal and global relations.

PURPOSE AND JOY



*He who binds to himself a joy
Doth the winged life destroy
But he who kisses the joy as it flies
Lives in Eternity's sunrise
William Blake, MS Note-book.*

A sense of purpose can help us overcome the most onerous difficulties in our lives, by taking the focus away from our failings and problems, and shining the light on our strengths and talents. By concentrating on our purpose we can distract ourselves from our troubles, and maintain the forward momentum of our lives. A sense of purpose can also lead to feelings of happiness and joy. Ancient astrologers believed that a person could either identify with their human body and human life, or could focus on a spiritual life. A rewarding spiritual life can help ease human pain and suffering, and inject joy into every day life. A sense of purpose can assist the process of transferring our identification from our human selves to the spiritual sides of our nature, and one of the greatest gifts of astrology is to help us determine our purpose.

The North Node and South Node form an axis in astrology, which is said to represent one's destiny or spiritual quest in life. This axis is also linked with our purpose. The North Node points to a key lesson in our lives. It represents new experiences towards which we must aim during this life. We have already learnt the skills of its opposite point, the South Node, in the past. Now we must grow and stretch ourselves through the North Node.

Your North Node is in the seventh house and your South Node is in the first house of your birth chart indicating that you are destined to learn as much as you possibly can about relationships. This could be a challenging path, or it could be easy. Either way you benefit greatly through your relationship experiences, both personal and distant associations. You may also experience a sense that many unions formed in your life are

pre-ordained. You fare best when you learn to let go of ego-centred actions and become more focused on service to other people. You also benefit from choosing your marriage partner wisely, taking your time to consider the union.

Your nodal axis has the North Node in Capricorn and the South Node in the sign of Cancer denoting that yours is a quest for maturity. You've a tendency to become over-dependent on other people and cling to them as if you were a child. You burden others with your real or imagined emotional problems wanting them to take a parental role. You will spend much of your life searching for a father-figure unless you can rise to the challenge of becoming responsible for your own life. You need to let go of your personal problems and work towards your own respected place in the world.

The North Node and the Moon are combining to suggest that you're being urged to come to terms with the emotional side of your nature. You may have difficulty expressing your emotions, particularly in groups of people. This is an area which you need to develop throughout your life, so that you can learn to use your intuition. This will better help you to pursue your purpose in life.

You're on a quest to use your insights and personal experience to help others. This is because of the association of the North Node and the planet Pluto in your birth chart. You may encounter traumas during your lifetime, which will ultimately help to develop your resourceful nature.

The South Node and the Moon are combining to suggest that you're particularly aware of the importance of emotions, and are being encouraged to use your knowledge in a constructive way. However, there is a tendency for you to become stuck in negative emotional patterns of relating to other people. In other words you have difficulty expressing your emotions, and this may lead to periods of self-imposed isolation and needless worry about the future. This also creates obstacles for you achieving your purpose in life. Your challenge is to forge ahead with your life without relying too heavily on your emotions, and yet remaining responsive to other people.

The South Node and the planet Venus are combining in your chart to suggest that relationships play a key role in either helping or preventing you from achieving your purpose. Perhaps you struggle to relate intimately with other people, or perhaps you need to learn independence in order to focus on your own objectives. Either way, a major part of your life is spent learning about personal relating skills so that you can achieve your mission.

The Ascendant, or Rising Sign as it's sometimes called, is a key to discovering our purpose. Ancient astrologers believed that the Ascendant depicted our primary motivation as individuals. Some believed that it was one of the links to discovering what makes a person happy. When we're accomplishing our primary motivation then we're happy. The more modern Esoteric astrologers believe that this sensitive chart point reveals our soul's purpose. When we're carrying out our soul's purpose then we're joyful. They believe that acceptance of our purpose, or fate, can help us achieve success and satisfaction, and that meditation on the qualities of the Ascendant can help us focus on

our life's purpose.

The sign of Cancer is considered "feminine" by Ancient astrologers suggesting that you're not a risk-taker, but are more likely to wait until you feel comfortable before pursuing your purpose. You're also likely to depend on other people to take the initiative. Cancer is also a Cardinal sign denoting enterprise, enthusiasm, self-assertion and initiative.

Caring for others is your major purpose in life. This could be caring for your own family and friends, or caring for humanity, or both. You're impressionable, tenacious, hospitable, sympathetic and moody. You've strong feelings, ranging from the most pure feelings of compassion to the most intense feelings of hatred. On the positive side your life is motivated by the highest form of feelings motivating you to care for other people, and bringing both you and the other parties a sense of warmth and emotional satisfaction. However, on a negative note you're highly impressionable and your feelings may be misguided. You're sensitive and easily hurt, and can either build a protective wall if you feel vulnerable, or seek revenge. You need to be wary of judging situations based purely on emotion, and ensure that you're constantly working for the good of others.

In Esoteric astrology the sign of Cancer is linked with discovering the true sense of home, a spiritual home in which people can feel liberated. Your purpose is connected with creating a spiritual environment in which others can shine in their true light, whether this be for your immediate family or on a larger scale.

CONCLUSION

The text in this report has been written by Australian astrologer Stephanie Johnson. Stephanie holds a Bachelor of Arts (Journalism) and was a journalist in Australia, England and the USA for 15 years before becoming a professional astrologer. She is currently a Company Director of Esoteric Technologies Pty Ltd in Adelaide, Australia. She holds the Federation of Australian Astrologers (FAA) Practitioners' Certificate. In 2000 Stephanie, and her partner Graham Dawson, were each awarded an FAA Diploma for designing and developing the Solar Fire suite of programs. Her background is in Medieval and Esoteric Astrology.

Stephanie's background in medieval astrology can be detected in the direct style of the report. Medieval astrologers differed from modern-day astrologers in several ways. They didn't have a psychological approach to chart interpretation, but took a much more literal approach. They were very much concerned with the fortunes of an individual, whether a person would survive or not, and whether or not the person would experience good or failing fortunes. The author's particular area of interest in Esoteric astrology can be mainly detected in the section labelled "Purpose and Joy". In Esoteric astrology the purpose of an individual is linked to the soul. In other words it is believed that our souls determine our sense of purpose in the world, motivating us to put our gifts to good purpose.

The illustrations have been created by artist, illustrator and teacher, Janet Bridgland. Janet has held a number of exhibitions in art galleries in the city of Adelaide, Australia, as well as having a permanent exhibition of selected works in the boutique book shop, Back Pages Books, in the Adelaide Hills which she runs with her husband. Janet has illustrated a number of books for the publishing company, Calypso. She teaches illustration at the Douglas Mawson Institute of TAFE, as well as individual art classes for children and adults.

This report is meant more of an introduction to the wonders of astrology rather than a complete course in its intricacies. Further studies, or a consultation with a professional astrologer, are encouraged to explore this most ancient scientific and philosophic tool.



PSYCHIC
PAUL DEAN
CLAIRVOYANT MEDIUM